



ÉCOLE RIVERVIEW SCHOOL NEWSLETTER



<http://www.wsd1.org/riverview/>

WELCOME BACK! BIENVENUE!

ÉCOLE RIVERVIEW SCHOOL STAFF - 2009/2010

SCHOOL PICTURE DAY
Individual and classroom picture day will be held on **Wednesday October 1st, 2009**
Individual retakes will be on **November 3, 2009**

FLU PANDEMIC PLANNING
Our school division and our school continue to plan for a possible flu pandemic. Please watch for information coming home.

GRADE 4 HEP B / GRADE 6 GIRLS HPV IMMUNIZATIONS
Volunteers Needed
The first of 3 immunizations dates for our Grade 4 Hepatitis B and Grade 6 girls HPV immunizations is set for **Thursday, October 21, 2009** in the morning. Parent volunteers are needed to support the process by supervising children who have just received their immunization and to distribute juice and a small snack. If you are available to volunteer, please contact Lise Bjarnason at 284-5983.

Mrs. Jennifer Warren	Room 105	Nursery AM & Reading Recovery PM
Mme Jacqueline Dubois	Room 103	Fr. Imm. (AM) & Eng (PM)
Mrs. Susan Harrison	Room 204	Nursery/Kindergarten
Mme Barbara Babletek	Room 206	Grade 1
Mm Christine Vermeulen	Room 201	Grade 1 French Immersion
Mrs. Stacey Hubatka Besser	Room 209	Grade 2 French Immersion
Mlle Leah Parker	Room 309	Grades 2/3 Multi-Age
Ms Jenny Menard	Room 208	Grade 3 French Immersion
Mme Annette Danis	Room 311	Grades 3/4 Multi-Age
M Christophe Asselin	Room 308	Grades 3/4 French Immersion
Mrs. Carol Hoydalo	Room 304	Grades 4/5 French Immersion
Mr. David Guidry	Room 310	Grades 5/6 Multi-Age
Mme Bobbie-Jo Leclair	Room 301	Grades 5/6 Multi-Age
Mrs. Donna Klassen	Room 120	Grades 5/6 French Immersion
Mr. Brian Yakimoski	Gym	Music
Mrs. Fran Chobotar	Room 116	Phys-ed
Mme Cori McLennan	Room 116	English Resource/S.E.R.T.
Mrs. Eva Kay	Room 303	Resource
Mme Melissa Ott	Library	Reading Recovery AM
Mr. Neil Kolton	Room 111	Reading Recovery AM
Mrs. Carol Fischer	Office	Information Technology
Mme Joanne Berger	Library	School Secretary
		L.T.A.

Mme Ella Kochenash
Mrs. Ruth Kostiuk
Mr. Michael McNeil
Mrs. Michelle Kaminski
Mr. Joe Sousa
Ms Irene Brandt
Ms Laura Reis
Mr. Evan Comstock
Mrs. Janice Sarassin Penner
Mrs. Kathleen Bell

Mrs. Bev Dueck
Mr. José Silva
Mr. Robert Zawadski

Custodian (Days)
Custodian (Evenings)
Custodian (Days/Evenings)

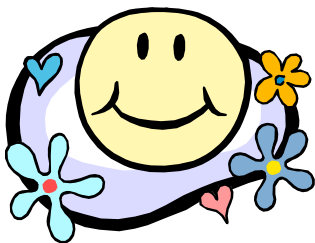
Ms Lise Bjarnason
Mr. Grant Bridgeman

Vice-principal
Principal



**LIBRARY
VOLUNTEERS
NEEDED**

Do you have any spare time....to help cover our new books in the library? If so, please contact Joanne Berger at the school, 284-5983.



NURSERY & KINDERGARTEN PROGRAM - 2009/2010

Kindergarten & Nursery parent(s)/guardian(s) are currently meeting their children's teachers in pre-school conferences (Sept. 9th & 10th). Parent(s)/guardian(s) of these students will have received appointment times for these days by mail. Staggered classes will begin on Friday, September 11th. Students will begin regular classes on Monday, September 14th, 2009.

PATROLS

Our 2009/10 patrol squads have successfully completed the training necessary to become a school patrol. They have been given specific instruction on traffic control and safety from Winnipeg Police Constable Huberdeau. If you drive your child(ren) to/from school we encourage you to help the patrols do their job safely by obeying their crossing signals. Some drivers wave the crossing children on as a courtesy; however, this may confuse the patrols or contravene the way in which they were trained to cross the children in a given situation. Also, please remember to stay well back from the corners where patrols are posted when waiting to pick up your child (ren). Cars gathered on Maplewood, at dismissal times can create an obstructed view for our patrols and cause an unsafe situation. We are asking our patrols to report licence numbers of vehicles blocking sidewalks, so that we may contact the Winnipeg Police Service. Thank you to all of the students who have volunteered for this very important job. We are looking forward to a great year!
Mrs. Hoydalo, Patrol Supervisor

TRAFFIC REMINDER

As of June, 1997, Casey Street between Maplewood Avenue and Bartlet Avenue has been rezoned to make the area a safer place for our students. Drop-off and pick-up of your child has been made easier by providing a **loading zone on the school side of Casey Street and a no stopping - no parking zone on the other side during school hours.**

What does this mean to the driving parents? All dropping-off and picking-up of your child should happen in the loading zone moving from south to north. **You cannot park in this loading zone.** If you wish to walk your child to or from the school doors, you need to park your car on one of the surrounding streets where parking is permitted. **The handicapped parking zone across from the Maplewood entrance is off limits to anyone without a handicap pass from 8:00 am to 4:00 pm. Please do not stop at all in this zone during the above times.**

PARKING LOT SAFETY

Stalls in the parking lot are rented each year by staff. We request the cooperation of parents in **NOT** using the parking lot for casual parking or for dropping off students, as spaces are allocated to staff members, and increased traffic at the parking lot entrance is a safety concern. For these reasons, the parking lot is off limits for all children at all times.

RUNNING SHOES

If at all possible, please purchase white soled or non-marking running shoes. Some black soled shoes leave "**awful**" marks on the floors. Our team of custodians takes great care in keeping our school clean.

CALLBACK PROGRAM

The Callback Program is an integral component ensuring the safety of our children, allowing for clear communication between the home and school should a child be away or fail to arrive at school. **If your child is to be away from school, please remember to call the callback number 284-8456 and leave a message on the answering machine indicating your child's name, room number and if they will be away in the morning, afternoon or all day. Please indicate the reason for absence.**

BICYCLES

We recognize when children take their bikes to school, it is a great way for them to keep active. While we do provide bike racks, we have found no matter how secure the lock, we have one or more thefts each year and several incidences of damage done to bicycles while children are in school. The police would prefer the parent/guardian, rather than the school, report the theft of a bike.

Parents are reminded schools do not carry insurance to cover loss of personal property, so students who bring their bicycles to school do so at their own risk. We ask parents to assist us in counseling students to secure their bicycles and to follow safe road practices, including using proper safety gear.

No skateboards, rollerblades, wheelies or heeies or scooters are allowed on school property.

DRESS CODE

The purpose of the dress code is not to stifle self-expression; rather our aim is to promote a level of decorum with regard to modesty and cleanliness. Clothing that is fashionable on the beach or worn on a stage by a popular band is not necessarily appropriate clothing to be worn in the school. Spaghetti straps, bare backs, midriff or shoulders, exposed undergarments and clothing with offensive wording and/or drawings are not acceptable. The student will be required to change the article of clothing in these cases. Other situations which arise will be dealt with on an individual basis at the discretion of the staff.

LABELLING PERSONAL BELONGINGS

Each year we accumulate in our "Lost and Found" hundreds of dollars worth of clothing, despite our efforts to locate the owners. Please take the time to label all of your child's belongings (boots, coats, hats, mitts, shorts, t-shirts, runners, pencil cases, etc.).

All lost and found items are located in the hallway by the music room. Parents/guardians/ students are welcome to check the lost and found box for any missing items. Smaller items (eg. keys, glasses, watches, etc.) are kept in the office.

PHONE TREE REMINDER

E.R.S.P.A.C. are planning on setting up a phone tree for each classroom. This phone tree can be used for a number of purposes (eg. in case of school emergency, classroom outings, activities, etc.). These forms will be sent home shortly, and it is very important to return them to the classroom teacher by Monday, September 14th.

ALLERGIES

Many children in our school have food allergies. A common allergy is nuts. We are requesting that your children do not bring snacks or lunch items containing nuts or nut products. This will really help to ensure a safe and healthy environment for those students who have a life threatening allergy to nuts. Information goes home each year and we hope all families will cooperate in reducing the chance of a problem arising.

MEET THE TEACHER

Come meet your school's staff on Thursday, September 17th starting at 6:30 pm in the gymnasium

Entrance Ways

For the safety of everyone, please do not leave items such as bicycles, sleds, strollers, etc. in the entrance ways of the school. These items should be left outside.

PHONE CALLS

Students are welcome to use the office phone for emergencies and other urgent matters. The office phone is not to be used for social arrangements.

REMINDER

The school day starts at 8:50 a.m. to 12:00 noon and resumes at 12:55 p.m. to 3:30 p.m. Playground supervision starts at 8:45 a.m. and 12:45 p.m. Students should arrive at school only when supervision is available.



Reminder to dog owners

As per Division policy, pets are not permitted on the school grounds or in the building. If there is a specific educational reason a dog or other animal needs to be brought to the school, please contact the office.

MEDICATION FOR STUDENTS

If a parent requests the school administrator **any** medication to their child, a letter from a medical doctor must support the request. Forms are available at the office. Students who need asthma inhalers or **Epi-pens** are requested to carry them with them at all times. Please notify the office and the classroom teachers of your child's medical needs.

STUDENT ACCIDENT INSURANCE

The Winnipeg School Division will be participating in the student accident insurance plan, endorsed by the Manitoba Association of School Trustees, and provided through the Reliable Life Insurance Company.

Application forms are attached. Parents are reminded that the completed forms are to be mailed directly to the insurance company and not returned to the school or the division. Each year we have families who benefit from having obtained this coverage.

INSERVICES/ADMINISTRATION DAYS

Manitoba Education allows up to 10 days of school closures during a school year. Some of these days will be used for parent/teacher/student conferences, administration days and curriculum topics. **For dates not already indicated on the school calendar**, a note will be sent home at least two weeks in advance indicating the date when your child(ren) will not have school due to a teacher attending an inservice. We will make every attempt to prepare you in advance, so you can make alternate arrangements for your child. Please see the attached calendar of events for dates that have already been scheduled.

ÉCOLE RIVERVIEW SCHOOL PARENT ADVISORY COUNCIL

Welcome students and families of the École Riverview School community to the 2009-2010 school year. ERSPAC members are all care-givers of a child attending École Riverview School and you are automatically considered to be a voting member of the council so you can have a say in what happens in the school environment. Meetings are held every fourth Wednesday of every month at 6:30 pm in the staff room and attendance is a great way to keep yourself up to date on the current and upcoming events in the school, as well as a way to meet your children's administrative team, teachers and other parents from the community. It also serves to facilitate communication between parents and the school regarding programs, activities and procedures. You might also want to consider being on the committee or a Room Representative .

Each class has a Room Representative who attends meetings regularly and acts as a link between the classroom and ERSPAC. Each classroom rep sets up a communication system for exchanging information with other parents by forming a class phone tree, sending letters or notes home, or personal contact. Please feel welcome to come out and meet us at our next meeting Wednesday, September 23 at 6:30pm. Your questions and new ideas are strongly encouraged!

Babysitting will be available as of 6:15 for the meetings. If you have any questions about ERSPAC please call Anne Freeth-Prud'homme @ 477-9254 or aprudhomme@shaw.ca.

STAFF MEETINGS

For the 2009/2010 school year, staff meetings will be held at **2:45 p.m. on the first Tuesday of every month.**



**ÉCOLE RIVERVIEW SCHOOL
STUDENT CODE OF CONDUCT
DISCIPLINE PLAN**

The Five School Rules:

- Students will be kind;
- Students will act safely;
- Students will do their job;
- Students will respect everyone and everything;
- Students will keep their hands and feet to themselves.

The discipline plan at École Riverview School has been designed to help students:

- Recognize their unacceptable behaviour;
- Encourage them to take responsibility for solving problems appropriately;
- Assist them with ways to solve their problem in a respectful manner;
- Create a safe, happy and productive environment.

Process

Students will always be given the opportunity to solve their problems. If this is not possible, the students will be asked to discuss the matter privately with staff, and be informed of the consequences, as appropriate.

Minor Offenses

Consequences may include verbal warning, time out from recess, loss of privileges, student letter to parents, student phone call to parents, student action plan, teacher communication, and act of restitution.

Serious Offenses (Physical /verbal abuse directed toward another person)

Consequence

- In/out-of-school suspension given at the discretion of the administration;
- An administrator will review the incident with all individuals involved.

Re-entry meeting for out-of-school suspensions involves administration, child, parent, classroom teacher, or other adults involved in the incident.

To be discussed at the meeting:

- Define the problem;
- Listen to everyone;
- Discuss availability of possible supports;
- Devise a plan/contract involving everyone;
- Decide on follow-up procedures.

For in-school suspensions:

- A plan is developed by the administrator, teacher, child and parent.

Winnipeg School Division Behavior Policies and Expectations

Along with the school rules and expectations, students are expected to follow the rules for bully-proofing our schools and act in accordance with all Winnipeg School Division policies and expectations for behaviour as distributed at the beginning of each school year.

Why Discipline?



Discipline shows the student what they have done wrong, how they have ownership of the problem and how to solve problems which they have created. It leaves dignity intact. Discipline uses logical and realistic consequences.

Barbara Coloroso
Discipline: Winning at Teaching



SEPTEMBER/ SEPTEMBRE 2009



Sun/Dim	Mon/Lun	Tue/Mar	Wed/Mer	Thu/Jeu	Fri/Ven	Sat/Sam
		1	 2	3	4	5
6	7 <i>Day 5</i>	8 <i>Day 1</i> S School Closed Administration day 	9 <i>Day 2</i> Students return Nursery & Kindergarten Interviews	10 <i>Day 3</i>	11 <i>Day 4</i> Welcome Back Assembly	12
13	14 <i>Day 5</i>	15 <i>Day 6</i>	16 <i>Day 1</i>	17 <i>Day 2</i> Meet The Teacher 6:30—8:00	18 <i>Day 3</i>	19
20	21 <i>Day 4</i>	22 <i>Day 5</i>	23 <i>Day 6</i> ERSPAC Meeting (6:30)	24 <i>Day 1</i>	25 <i>Day 2</i> Terry Fox Run	26
27	28 <i>Day 3</i> Bus Ridership	29 <i>Day 4</i>	30 <i>Day 5</i>			

LOOKING AHEAD IN OCTOBER

1st	School Photos
6th	Staff Meeting - 2:45 Dismissal
21st	Hep B
23rd	School closed - SAG

If your child will be absent from the lunch program, please call 284-5444.

Thank you!!

If your child will be absent or late, please call the Callback Program at 284-8456 before 9:15 a.m. and 1:15 p.m. Thank you!!



2009– 2010 Calendar of Events

September

- 8 School closed – administration day
- 9 Students return
- 11 Welcome back assembly (am)
- 17 Meet the teacher (6:30-8:00)
- 23 ERSPAC meeting (6:30)
- 25 Terry Fox run
- 28 Bus Ridership



October

- 1 School Photos
- 6 Staff Meeting – 2:45 dismissal
- 21 Hep B
- 23 School closed – Teacher inservice
- 28 ERSPAC meeting (6:30)
- 30 Halloween assembly (p.m.)

November

- 2 School closed – Teacher inservice
- 3 School photo retakes, Staff Meeting – 2:45 dismissal
- 10 Remembrance Day Assembly (a.m.)
- 23 Reports and conference confirmations go home
- 25 ERSPAC meeting (6:30)
- 25 Hep B (tentative)
- 26 Parent/Teacher/Student conferences 4:00-9:00
- 27 Parent/Teacher/Student conferences 9:00-3:30

December

- 1 Staff Meeting – 2:45 dismissal
- 1,2,3 Hearing Screening - Kindergarten
- 10 Winter Concert (N-2)
- 11 Assembly (am)
- 21 Winter Break begins

January

- 4 School reopens
- 5 Staff Meeting – 2:45 dismissal
- 20 Hep B (tentative)
- 21 Assembly (pm)
- 27 ERSPAC meeting (6:30)

February

- 2 Staff Meeting – 2:45 dismissal
- 11 Festival kick-off assembly (2:45)
- 12 Festival Activity day
- 15 Louis Riel Day – Schools closed
- 16 Festival cold date
- 24 ERSPAC meeting (6:30)
- 24 Music Festival begins

**STAFF MEETINGS
ARE HELD THE
FIRST TUESDAY
OF EACH MONTH
RESULTING IN AN
EARLY DISMISSAL
OF 2:45 P.M. ON
THOSE DAYS.**

March

- 2 Staff Meeting – 2:45 dismissal
- 12 Assesment PD – School closed
- 18 Concours d’art oratoire divisionnaire
- 22 Spirit Week begins
- 24 ERSPAC meeting (6:30)
- 25 Reports go home
- 26 Assembly (am)
- 29 Spring Break begins

April

- 5 School reopens
- 6 Staff Meeting – 2:45 dismissal
- 19 Conference confirmations go home
- 22 Parent/Teacher/Student conferences 4:00-9:00
- 23 Parent/Teacher/Student conferences 9:00-3:30
- 28 ERSPAC meeting (6:30)
- 30 Assembly (pm)

May

- 4 Staff Meeting – 2:45 dismissal
- 5 Bus Ridership
- 19 Hep B
- 21 Newsletter submissions due
- 25 Goal setting – School closed (a.m.)
- 26 ERSPAC meeting (6:30)
- 28 Assembly (am)

June

- 1 Staff Meeting – 2:45 dismissal
- 18 Itinerant marks due, Newsletter submissions due
- 21 Reports due to admin
- 23 ERSPAC meeting (6:30)
- 24 Grade 6 Farewell (2:00 - 3:30)
- 25 Grade 6 Activity Day
- 29 Reports go home
- 29 School closed PM only
- 30 Last day